

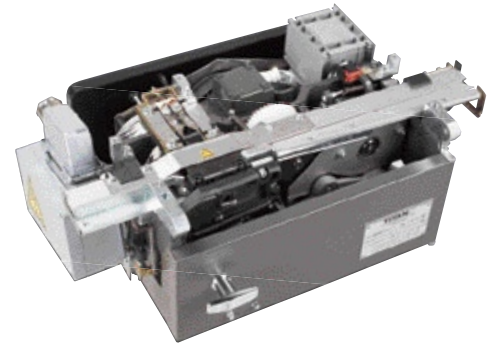
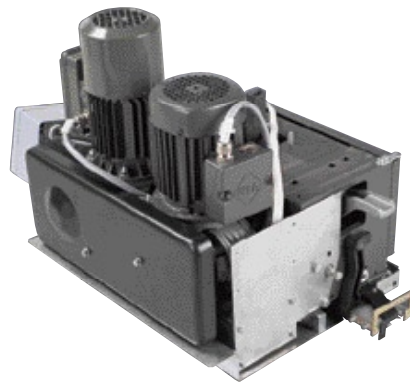
The Itipack VK 30 strapping head is intended for installation in semi-automatic and fully automated non-metallic strapping machines.

It functions as a sturdy, reliable and easy-to-maintain central aggregate for bundling, packaging and securing a variety of different types and shapes of packages.

It is a quality product and is used successfully in a number of fields of application.

It has established itself in numerous lines of industry throughout the world.

The Itipack VK 30 strapping head is electrically operated and is fully wired ready for operation after inserting the plug into a socket. This means it can be quickly removed and tested outside the machine during service and repair work.



The 3 threephase motors enable a very flexible control engineering design of the unit, even for special applications. The Itipack VK 30 strapping head can be used with polyester (PET) and other heat sealing straps with widths between 16 and 19mm.

The strap width can be infinitely adjusted.

Polyester straps of between 0.7 and 1.35 can be used.

The maximum possible strap tension is 3200N.

Every strapping head has to pass a complete functional test and high-voltage test before leaving our works.

The Itipack VK 30 strapping head complies with German and European safety standards.

TECHNICAL DATA

- high-efficiency, all electric, heat seal strapping head
 - manufactured in the Schwelm region of Germany
 - can be used in almost every type of heavy duty industry
 - performs well in the lumber, brick and even the steel industry
 - does not need lubrication
 - the sealing heater blade has a precision temperature controller adjustable to suit the various grades and types of plastic strapping
 - 80% - 90% efficiency on the strap braking load are capable with machine grade PET and PP strapping
- Strap Widths:** 5/8" - 3/4"

Strap Thickness: 020" - 044"
Strap Quality: strap suitable for automatic machines
Strap Tension (Adjustable): 720 lb. max.
Minimum Flat Surface: 6"
Length of Seal: 1"
Feed Speed: 14.5 ft/sec
Control Voltage: 24DC or 110 V/AC

